

Ålesund / Trondheim:

Post:

Postboks 6551 – Hatlane
6024 Ålesund

Kontor:

Vestre Bingsa Industriveg 7
6019 Ålesund

Telefon: 0047 - 95 17 17 00

0047 - 90 80 54 10

E-post: post@heisplan.no

Oslo / Stavanger / Bergen:

Post:

Slattum Terrasse 39C 1480 Slattum
Telefon: 0047 - 91 39 77 15

Besøksadresse:

Hadelandsveien 835
1482 Nittedal

www.heisplan.no

www.rulletrapp.com



COEFICIENCY, a global aim.

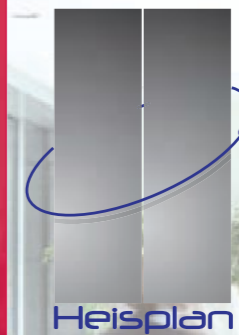


MP | PASSENGERlift



MP | PASSENGERlift

Electric and Hydraulic lifts
for passenger transport



FOR RESIDENTIAL, OFFICE AND
PUBLIC USE BUILDINGS

MP PASSENGER lift

Lifts for residential, office and public use buildings

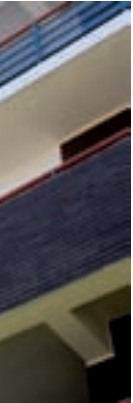
High level lifts

When a product combines efficiency, design, full capacity and profitability, expectations increase. MP PASSENGER lift is a lifts line conceived and created to raise our customers' satisfaction and comfort. Its diversified options provide a wide range of solutions that adapt to any need.



MP PASSENGER lift takes care of everything down to the last detail. Its extra versatility allows it to face the most complex limitations. The result is not a mere flexible product: it represents a new form of adaptability and performance.

MP PASSENGER lift means complexity at the service of simplicity: its multiple options have been created to make your life easier. Let our professionals advise you: they will guide your choice of the best option for your needs.



MP PASSENGER LIFT USES

Thanks to its adaptability to the demands of space, capacity and passenger traffic, MP PASSENGER Lift is the ideal elevation solution for any type of building.

RESIDENTIAL

MP PASSENGER Lift line uses high-quality technologies and models to service residential buildings: they guarantee comfort, safety and all facility for its installation and maintenance.

OFFICES

The safety and robustness of our product suit the high levels of passenger traffic in public use buildings. Its markedly practical character perfectly complements MP PASSENGER Lift's design.

PUBLIC USE

Aesthetics, capacity and safe performance make MP PASSENGERS Lift the ideal option for installation in buildings devoted to professional activities, where we can guarantee the maximum level of integration with the lifts surroundings.

Heisplan

SATISFACTION
RAISING
PERFORMANCE



EXPERIENCE AND VERSATILITY

Innovation and cooperation to offer the best product

Years of research and experience are the foundation for a product line capable of offering the best results in all criteria. Advantages created to optimize performance and comfort are shared by all MP PASSENGER lift models.

Acoustic insulation = serenity

At MP, we are painstaking in ensuring a buildings' acoustic quality. Each model uses its specific features to minimize noise levels which are controlled according to current regulations.

Versatility and flexibility

MP PASSENGER lift philosophy consists of providing options instead of products. Each model has been conceived with complete adaptability in mind, an adaptability which guarantees the greatest capacity regardless of the specific limitations of each case, in either new or existing buildings.

High technology = comfort

As leaders in the creation and manufacture of electronic components, we constantly reinvent our products to improve their comfort and performance. In addition, the technology we put into practice helps us to achieve maximum results in terms of energy and materials savings.

TECHNOLOGY AT THE SERVICE OF PEOPLE

MP PASSENGER LIFT LINE

Adapting to your needs as our distinguishing element

At MP, we defend open solutions that benefit the user for the lifetime of the lift. We believe that technology has to be at the service of people and not vice versa, which would make maintenance and the required reforms more expensive.

All MP PASSENGER lift products comply with the current European Regulations: 95/16/CE, 89/336/CE, EN 81-1:1998, EN 12015 (1998), EN 12016 (1998).
Optional: EN 81.28, EN 81.70 (6, 8, 10,13 pers.)



ELECTRIC

From the most advanced **Gearless** technology - fully compatible with environmental requirements - to traditional solutions, MP offers products designed in-house to adapt to any building need.

HYDRAULIC

Is the ideal solution for buildings characterized by reduced height and low to medium traffic flows. In particular, thanks to its adaptability to small or inexistent shafts, it represents the best option for refurbishing buildings without a lift.



AESTHETICS

Aspects that don't go unnoticed

At MP we consider aesthetics as part of our products' quality. That is why, we offer our customers a wide range of options among which you can choose the one that fully meets your taste and budget.



CARS

Lifts provided with the exclusive wide range of MP cars.

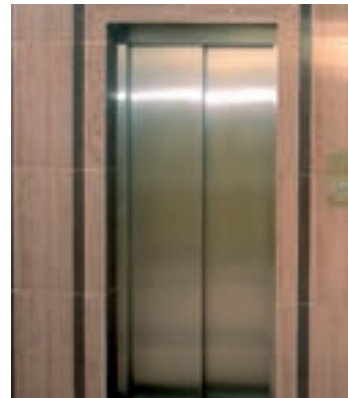
Adapted to the most recent regulations in terms of accessibility. With two car lines:

- **PRIMA**: cars designed for residential buildings.
- **PREMIERE**: cars designed for public and office buildings.

To better suit your needs, we provide three products lines based on three **manufacturing concepts**:

- D-** Attractive colors applied **directly** onto structural steel walls.
- C-** **Compact**, sturdy walls with a wide variety of finishes that can be combined to fit classic and modern atmospheres.
- V-** A **view** while in motion, cars with a safety glass wall.

LANDING DOORS

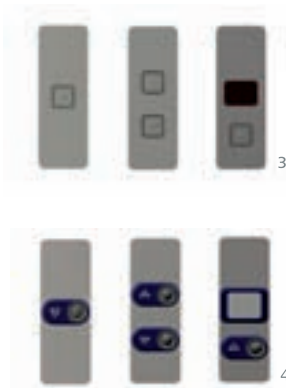







Telescopic opening



Central opening

- Composed of 2 panels with telescopic opening (central opening optional).
- Finishes in epoxy RAL 7044 (standard) or stainless steel (optional).
- Numerous clear entrances.



COMPAC	ROLLER
 (TB) Braille	 Saturno
 (TG) Engraved	 Marte
 (TI) Injected	

1. Compac Full-height control station
2. Roller Full-height control station
3. Compac Landing control station
4. Roller 1 2 Landing control station



OPERATING PANELS

The car operating panel, with finishes in stainless or plasticized steel, is fully compatible with the rest of the decoration. Two lines of operating panels, with a number of finishes and colors, lend a distinguished quality to each option.

- **COMPAC Series.** Anti-vandalism pushbuttons in stainless steel with red or blue record light and three types of finishes:
 - **(TB) BRAILLE** Identification whether embossed or in Braille.
 - **(TG) ENGRAVED** Identification engraved.
 - **(TI) INJECTED** Color contrast between the identification, whether embossed or in Braille, and the background.
- **ROLLER Series.** Modern and functional. Identification whether embossed or in Braille in white, on protective edge in black or blue. Record lights red or blue.
 - **SATURNO;** Mobile steel element and CORONA record light.
 - **MARTE;** Bold design of the mobile element and semispheric record light.



LANDING OPERATION PANEL

Generally mounted on a stainless steel plate, with one pushbutton or two, for the selective control unit in ascent and descent.

Optional digital position indicator on the operational panel itself.

Multiplex installations of two lifts normally share the operational panel, located on the wall between the two doors.

CAR OPERATION PANEL

With the full car height (column), it includes landing pushbuttons whose number depends on the building floors one, digital position indicator, emergency luminaire, control pushbuttons (alarm, door opening), overload indicator, hands-free emergency telephone and a plate engraved with important data about the installation.

Finishes befitting the car decoration. The direction arrows (FLJ) on the car jambs indicate the direction of its next travel, before the user enter the car.



ELECTRONIC CONTROLLER

Technological options raising your possibilities

A controller designed with the latest electronic advances outstanding in its adaptability to the wide range of traction technologies. It includes a frequency changer designed by MP with DSP technology processors DSP (Digital Signal Processing). Our main objective is to guarantee maximum levels of safety and comfort for the passenger, as well as to make installation and maintenance easier.



Our customisation options don't end there: on demand and meeting the installation requirements, we can implement any customization. In addition all our products, services and procedures comply with the current regulations: serenity and efficiency that is a cut above.

FUNCTION	DESCRIPTION	TYPE		
		ELECTRIC		HYDRAULIC
		Machine roomless S	With machine room C	With machine room or machine roomless S and C
Automatic rescue	In the event of a power failure, the car doesn't get trapped between floors. It goes back to the closest floor and the doors open.	OPC	OPC	OPC
Main floor	Different treatment for the main floor, adapting to the traffic flows of each building.	STD	STD	STD
Signalling	Adjustments to signalling and sequencing are shown by display relative to their parameters, coupled by acoustic registers and car arrival gong	STD	STD	STD
Night Profile	Removes acoustic records and gong, as well as car light (optional).	STD	OPC	OPC
24H Emergency telephone	Permanent bidirectional communication by hands-free telephone in car.	STD	STD	STD
Protection	Control access to determined floors by a code entered on car pushbuttons. Automatic deletion of car unnecessary calls.	STD	STD	STD
Open doors approach	Doors start opening just before landing approach improving traffic control.	OPC	OPC	OPC
Floor Configuration	Possibility to make an independent configuration for each floor, double or triple landing, access, short floors, etc.	STD	STD	STD
Access control	Use limited to authorized personnel, controlled by keyswitch, proximity cards or code on pushbutton panel.	OPC	OPC	OPC
Adaptation to regulations that don't have to be compulsorily followed	For instance, compliance with EN 81-70, barriers removal for disabled persons.	OPC	OPC	OPC
Fire-Brigade Operation	In the event of fire this takes lifts to the escape stop where they remain with the doors open.	OPC	OPC	OPC
Up to sextuplex, 8 levels , Selective Control Unit in Ascent and Descent	Multiple installation management, giving priority to performance and minimizing wait-time. Optimized thanks to vertical traffic management software.	STD	STD	STD
Up to sextuplex, 32 levels , Selective Control Unit in Ascent and Descent		OPC	OPC	-

Heisplan



REFERENCES

Find below some projects installed worldwide, in which MP PASSENGER lift line provides comfort and full-capacity.

FOR RESIDENTIAL, OFFICE AND
PUBLIC USE BUILDINGS

Higher flexibility

One of the key factors for the excellent performance of MP PASSENGER lift products is its capacity to adapt to specific needs. A wide range of options guarantees our best solution for each case.

MP PASSENGER lift
Catalonia Princesa Hotel
Barcelona. Spain.



MP PASSENGER lift
Rehabilitation Centre,
Midzylwodie, Poland.



Interaction in every sense

The variety of MP PASSENGER lift line isn't only manifest in its technological capacity. A suitable model's selection can be complemented by the extensive range of available optional features, guaranteed to optimize the interaction between the lift and its environment.

MP PASSENGER lift
Royal Farmers club. Seville.



MP PASSENGER lift
Don Orione Hospital
Milan, Italy.

At the service of the future

Modernity means movement. The MP PASSENGER lift line evolves with new needs to provide maximum results in terms of performance, aesthetics and comfort.

MP PASSENGER lift
Messe Wells
Wells, Austria.



MP|PASSENGERlift

FOR RESIDENTIAL, OFFICE AND
PUBLIC USE BUILDINGS

